

# CONSERVATION NEWS

Newsletter of  
the Defiance  
Soil & Water  
Conservation  
District



In Cooperation with the Defiance County Commissioners

## Winter 2014

### Inside this Issue

#### Page 2

- \* Ag Appreciation Breakfast
- \* Affiliate Members
- \* Rental Equipment

#### Page 3

- \* Congratulations!
- \* Powell Creek Project
- \* Farmland Preservation
- \* Healthy Soils Programs

#### Page 4

- \* Fish Order Form

#### Page 5

- \* Tree Seedling Order Form

#### Page 6

- \* Tree Seedling Descriptions

#### Page 7

- \* Word Search

#### Page 8

- \* Kids' Science Camp
- \* Educators' Extravaganza

2014 Tree &  
Fish Order  
Forms Inside

## Farm Fair 2014

Another successful Farm Fair was held at the Northtowne Mall on January 17<sup>th</sup>-19<sup>th</sup>. Conducted by the District and the Tinora Young Farmers, the fair provided an opportunity to see state-of-art farm equipment and the chance to step back in time while viewing the 19 antique tractors on display—compliments of Black Swamp Antique Tractors.

The Pedal Pull was a hit as well as the entertainment provided by "Harps & Strings," a gospel country and bluegrass group.



Mackenzie Maassel going for the "full-pull."

New to this year's fair, the District included a display of conservation practices that homeowners can utilize to conserve water and improve water quality. If you missed it, this display will be set up at the mall through March.

Thank you to Buckeye Seamless Gutters, Kent English, Scott Singer, and Mark Shininger for their efforts in building the display. We greatly appreciate the generosity of the sponsors and participation of all the exhibitors.



The District's rain barrel & rain garden will be on display at the mall through March.

## District Phone Number Update

As a result of recent modifications to our phone system, the District has changed its incoming phone line. Our office can now be reached by calling: **419-782-1794**



## Supervisor Administered Oath of Office

Incumbent Keith Schroeder was sworn into office by Defiance County Commissioner, Otto Nicely, on January 21, 2014. Elected to a three-year term, Keith will join Board Members Tom Beck, Bill Moats, Dan Vetter and Roger Zeedyk IV in directing the Defiance SWCD's numerous natural resource conservation programs. Congratulations to Keith and thank you to the entire Board of Supervisors for your continued service to the District and Defiance County residents.



Commissioner Otto Nicely administered oath of office to Keith Schroeder.

## **Ag Appreciation Breakfast Scheduled**

The OSU Extension Office, Defiance SWCD, and Defiance Chamber of Commerce are hosting their annual Agriculture Appreciation Breakfast on Tuesday, March 25<sup>th</sup> from 8:00 a.m. to 10:00 a.m. at the Defiance K of C Hall on Elliott Road. The public is invited and encouraged to attend with a farmers' share breakfast being offered for \$3.00 per person. Hallie Sue Hiser, FFA District 9 President (Greeneview-GCCC), will be the keynote speaker. She will be followed by the induction of new members to the Ag Hall of Fame. In addition, results from ODNR's WLEB Nutrient Reduction Program will be highlighted. Please call the OSU Extension office at 419-782-4771 to RSVP for the event.



Hallie Sue Hiser,  
keynote speaker.

## **Affiliate Members**

The District would like to thank our 2014 Affiliate Members for their generous financial support. Each have contributed immensely to our education program, allowing us to extend our conservation efforts to both students and teachers throughout Defiance County.



Andre Land Forming	The Hubbard Company	Right of Way Management
Archbold Equipment	Jewell Grain Company	Shininger Surface Drainage
Buckeye Seamless Gutters	Liechty Farm Equipment	Sines Excavating, LLC
Darren L. Bok Auctioneering	Mark Moats Ford	Slattery Oil Company, Inc.
Ed Perry Excavating, LLC	Marking Outdoors	Spartan Insurance Agency
Farm Credit—Mid America	McCalla Excavating	Spatial Ag Systems, LLC
Farmer Fabrication & Welding, Inc.	Midwest Community FCU	State Bank
Farmers & Merchants State Bank	Nester Ag, LLC	Thomas J. Henry Surveying
The Hicksville Grain Company	Ney Oil Company	Webb Construction, LLC
Historic Hardwoods	Ridgeville Elevator	Werlor, Inc.

## **Rental Equipment**

The District will continue to have rental equipment available for Defiance County landowners. Please note that our delivery fee schedule has changed from previous years—it will no longer be a flat rate county-wide. Also, due to the very large number of planned CRP mid-contract interseedings, our Great Plains no-till seeder will be very busy this spring. Please make arrangements for purchasing seed and scheduling equipment far in advance. Some of you may also want to consider hiring the work done by a private contractor to ensure that the plantings are completed by the seeding deadlines. Our rental equipment includes:

**Great Plains No-Till Drill**

**Brillion Grass Seeder**

**Pull-behind Tree Planter**

**Straw Mulcher/Blower**

Please contact Tyler Miller for scheduling and additional information.

### **SWCD Office Hours**

Mon.-Fri. 7:30 a.m. – 4:00 p.m.

The SWCD Board of Supervisors typically holds its regular monthly meeting (open to the public) on the 3<sup>rd</sup> Tuesday of each month at 7:30 a.m. Any changes to this date/time will be posted in the local newspaper.

The Defiance SWCD and the U.S. Department of Agriculture (USDA) prohibits discrimination against its customers, employees and applicants for employment on the bases of race, color, national origin, age, disability, sex, gender identity, religion, reprisal, and where applicable, political beliefs, marital status, familial or parental status, sexual orientation, or all or part of an individual's income is derived from any public assistance program, or protected genetic information in employment or in any program or activity conducted or funded by the Department. (Not all prohibited bases apply to all programs and/or employment activities.)

## **Congratulations!**

The *Conservation News* Fall Edition prize giveaway was awarded to Bonnie Kaemming of Defiance. Bonnie received a bird feeder and seed to attract wildlife and promote backyard conservation. The feeder is surely being utilized by the birds this winter!

Winning couldn't be much easier. Simply take a few minutes to complete the puzzle and return it to our office. Puzzles submitted by the deadline are entered into a random drawing where one winning puzzle is drawn. You could be our next winner!



Bonnie Kaemming, Fall word puzzle prize winner

## **Powell Creek Nutrient Reduction Project**

The Defiance and Putnam SWCDs continue to work with landowners to implement conservation practices within the Powell Creek watershed. The project's primary objective is to address nutrient and sediment impairments to water quality within the watershed. Please visit the Powell Creek webpage at: [www.defiance-county.com/swcd/powell-creek.php](http://www.defiance-county.com/swcd/powell-creek.php) for detailed information about the watershed and project specifics. Ninety-five percent cost share is available through 2014 for wetland restorations, cover crops, VRT nutrient management plans, whole farm management plans, subsurface drainage management, and other conservation practices that address erosion and nutrient loading concerns. Contact the District at 419-782-1794 for more information.

## **Farmland Preservation**

Did you know that the State of Ohio is one of the top two states in farmland loss with over 40,000 acres converted every year? Black Swamp Conservancy works with farmers throughout Northwest Ohio to ensure that their land stays in agriculture forever. If you are interested in preserving your farmland, contact Mike Powell at 419-872-5263 or [mpowell@blackswamp.org](mailto:mpowell@blackswamp.org).

## **Healthy Soil Programs**

Join us to kick off our healthy soil programs with a community screening of *Dirt! The Movie*, "an insightful and timely film that tells the story of the glorious and unappreciated material beneath our feet." The screening will be Monday, March 10<sup>th</sup> at 6:30 p.m. at the Second Story, 210 Clinton St., Suite A, in Defiance. Please call Stephanie at 419-782-1794 or email at [ssinger@defiance-county.com](mailto:ssinger@defiance-county.com) to reserve your spot!

The District will also be hosting a Composting Workshop at the Defiance Public Library on Thursday, April 3<sup>rd</sup> at 6:30-7:30 p.m., Compost bins will be available at significantly reduced prices for workshop participants. Registration is required. Please call or email Stephanie at the District.

### **Other Dates:**

**March 6<sup>th</sup> at 6:00-7:30 p.m.**—Upper Maumee Partnership Meeting at Hicksville Municipal Building. Speakers will be Alison Rifenburg providing a Maumee Water Quality Data Summary and Stephanie Singer introducing the Volunteer Stream Monitoring Network.

**April 15<sup>th</sup> 4:00-6:00 p.m.**—Tree Seedling Planting at Penney Nature Center. This is a perfect service project for clubs and community groups!

**Save the Date**—Coming This Spring!

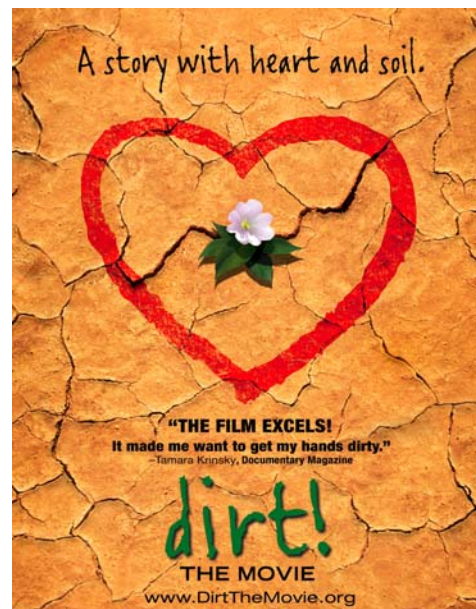
Land to Lake Workshops: Rain Gardens and Rain Barrels

March 29<sup>th</sup> at Defiance County Master Gardener Workshop

April 25<sup>th</sup>, 26<sup>th</sup>, 27<sup>th</sup> at Kircher's Open House

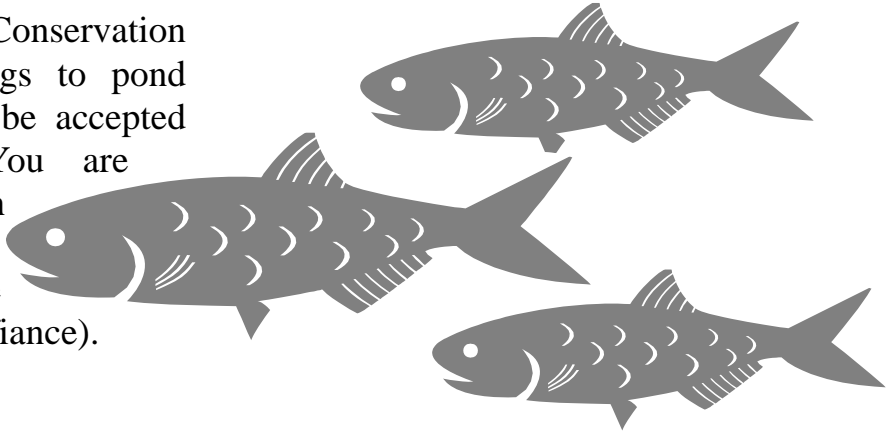
May 10<sup>th</sup> at Defiance Lilac Festival

More details coming soon!



# 2014 Fish Fingerling Sale

The Defiance Soil and Water Conservation District is offering fish fingerlings to pond owners in the area. Orders will be accepted through Friday, May 9<sup>th</sup>. You are responsible for picking up your fish on Tuesday, May 13<sup>th</sup> at 2:00 p.m. at the Defiance SWCD office (06879 Evansport Road, Defiance).



**Payment must accompany order.**

<u>SPECIES</u>	<u>SIZE</u>	<u>PRICE PER FISH</u>	<u>QUANTITY</u>	=	<u>TOTAL</u>
Bluegill	2"-4"	75¢			
Redear Shellcracker	2"-4"	85¢			
Largemouth Bass	2"-3"	85¢			
Channel Catfish	4"-5"	80¢			
Yellow Perch	2"-3"	80¢			
Fathead Minnows	1"-2"	6¢			
White Amur	8"-12"	\$13.00			
			<b>Total</b>	=	

Name \_\_\_\_\_ Telephone \_\_\_\_\_

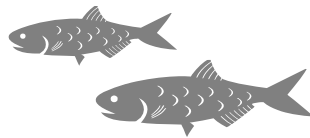
Address \_\_\_\_\_

City \_\_\_\_\_ State \_\_\_\_\_ Zip Code \_\_\_\_\_

**Make checks payable to: Defiance SWCD**  
 Mail to: Defiance SWCD, 06879 Evansport Road - Suite C - Defiance, OH 43512

Retain this portion as a reminder that fish pick-up is **Tuesday May 13, 2014 at 2:00 p.m.**

Please bring containers with your pond water the day of pickup.



5 gallons per White Amur  
 5 gallons per 25 fingerlings

Oxygen will be added to the bag for those traveling long distances.

<u>Species</u>	<u>Stocking Rate for 1 Acre Pond</u>
	<u>#/Acre</u>
Largemouth Bass	100
Bluegill/Redear Shellcracker	500
Channel Catfish	100
Yellow Perch	100
Fathead Minnows	1,000
White Amur (depending on quantity and species of pond weeds)	5



DEFIANCE SOIL & WATER CONSERVATION DISTRICT

Tree Seedling Sale 2014

(order deadline March 14, 2014)

Packets Ordered

Packet Description

Price

Total \$

_____	20 – American Arborvitae 8”-18”.....	\$18.00	_____
_____	10 – Bald Cypress 12”-18”.....	\$ 8.00	_____
_____	10 – Colorado Blue Spruce 9”-15”.....	\$ 8.00	_____
_____	10 – Eastern White Pine 10”-16”.....	\$ 8.00	_____
_____	10 – Norway Spruce 10”-18”.....	\$ 8.00	_____
_____	10 – Pin Oak 12”-18”.....	\$ 8.00	_____
_____	10 – Sassafras 12”-18”.....	\$10.00	_____
_____	10 – Shellbark Hickory 12”-18”.....	\$12.00	_____
_____	10 – Silver Maple 12”-18”.....	\$ 8.00	_____
_____	10 – Swamp White Oak 12”-18”.....	\$ 8.00	_____
_____	10 – Sycamore 12”-18”.....	\$ 8.00	_____
_____	10 – American Crabapple 12”-18”.....	\$ 8.00	_____
_____	10 – American Plum 12”-18”.....	\$ 8.00	_____
_____	10 – Redbud 12”-18”.....	\$ 8.00	_____
_____	Marking Flags (each).....	\$0.10	_____

Grand Total

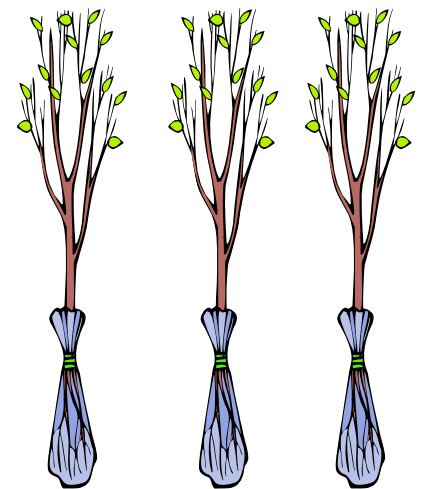
\_\_\_\_\_

Name: \_\_\_\_\_

Street Address: \_\_\_\_\_

City, State, Zip: \_\_\_\_\_

Phone: \_\_\_\_\_



Please make checks payable to: Defiance SWCD, 06879 Evansport Road, Suite C, Defiance, OH 43512. All orders must be paid in full. You will be notified in April via postcard when to pick up your trees.

For Office Use Only:

Order Number \_\_\_\_\_

Receipt Number \_\_\_\_\_



## Seedling Descriptions

### Evergreens

**American Arborvitae** - A pyramidal shaped conifer that grows well in a wide range of soils and drainage conditions. Excellent for screens and windbreaks as it is dense and full to the ground. Recommended spacing for windbreak planting is 6 feet. [40-60 feet tall by 10-15 feet wide]

**Bald Cypress** - A stately, long-lived deciduous conifer well adapted to very wet to moderately well-drained soils such as muck, clay, or fine sands. Initially pyramidal shaped but becomes more columnar and open upon maturation. Recommended spacing for windbreak planting is 10 feet. [50-70 feet tall by 25+ feet wide]

**Colorado Blue Spruce** - A dense, conical evergreen with stout, prickly 3/4 - 1 1/4 inch needles, bluish green to bright silvery-blue in color. Adaptable, it prefers rich, moist soil, full sun, and thrives in dry well-drained sites. Recommended spacing for windbreak planting is 10 feet. [80-100 feet tall by 30 feet wide]

**Eastern White Pine** - Pyramidal in youth, this shade tolerant tree forms a graceful plume like crown at maturity. Thrives in moderately well-drained soil types. The soft needles occur in 5's, are 3-5 inches long, and are rich green to bluish green. Recommended spacing for windbreak planting is 10 feet. [75-100 feet tall by 50 feet wide]

**Norway Spruce** - An extremely attractive pyramidal evergreen with strong, weeping branches that extend all the way to the ground. Needles are shiny green 1/2-1 inch long and flat. One of the fastest growing of all spruces. Recommended spacing for windbreak planting is 10 feet. [60 feet tall by 25 feet wide]

### Large Hardwoods

**Pin Oak** - A pyramidal tree through early maturity, its form turns more oval in older age. Fast growing, tolerates wet soils, and likes full sun. Glossy dark green leaves turn russet, bronze, or red. Upper branches are upright, middle ones horizontal, and its lower limbs slant gracefully towards the ground. Widely used as a street and landscape tree. [60-70 feet tall by 25-45 feet wide]

**Sassafras** - A medium sized, native tree recognized by its brilliant display of fall foliage and aromatic smell. This rounded-canopy tree is slow growing, thrives in full sun, and is well adapted to various soils. Medium green leaves turn to colors of orange, scarlet, purple, and yellow in the fall. [30-60 feet tall by 25-40 feet wide]

**Shellbark Hickory** - A massive, slow growing tree with a narrow, oblong crown. Renown for its production of huge, sweet nuts and strong, dense wood. Prefers deep, moist to occasionally wet soils under sunny conditions. Very tolerant of summer drought. [80 feet tall by 40 feet wide]

**Silver Maple** - A rapidly growing native shade tree with leaves having a silvery-white underside. Leaves turn a brilliant yellow in the fall. Vase shaped tree prefers full sun and tolerates a wide range of soils. Tree has strong preference to heavy, poorly drained soils. [80 feet tall by 60 feet wide]

**Swamp White Oak** - A medium sized tree with dark green leaves and a whitish gray bark. Well adapted for growth in very wet, swampy conditions, but is also very drought tolerant. The acorns that fall from the tree are eaten by squirrels, chipmunks and deer. The Swamp White Oak is valued for its timber used for furniture, flooring and cabinet making. [70 feet tall by 50 feet wide]

**Sycamore** - A fast growing, massive, open crowned, native tree renowned for its ability to obtain the greatest trunk diameter of any temperate hardwood tree. Bark is a patchwork of browns, yellows, and greens against a white background. Requires full to partial sun and can tolerate saturated soils for two to four months of the growing season. [80 feet tall by 60 feet wide]

### Small Hardwoods

**American Crabapple** - A small, slow to moderate growing native tree known for its abundance of fragrant white/pink blossoms. This tree will produce numerous small, bitter fruits that are excellent for jam and are also preferred by wildlife. This species is very adaptive and will grow on most sites that provide full sun. [35 feet tall by 25 feet wide]

**American Plum** - Also known as "Wild Plum", this native, small tree/spreading shrub produces white, pungently sweet blossoms in early spring and produces sweet fruits when fully ripe. Fruits sought by wildlife and also make great jams and jellies. Thrives in full sun on a wide variety of soils. [20 feet tall by 25 feet wide]

**Redbud** - A small, moderate growing native tree that produces showy, lavender-pink flowers in early spring. When mature, tree has a rounded, vase shape. Tree prefers full sun to partial shade. Reddish-purple leaves change to dark green, then to yellow in the fall. It provides winter food for birds and can be used for nesting sites and materials. [30 feet tall by 10 feet wide]

**Farm Fair 2014 Word Search**

Search the puzzle below for exhibitors and items relating to Farm Fair 2014. Complete the word puzzle and submit it to the SWCD office by March, 21 2014. An entry will be randomly drawn and the winner will be awarded a \$20.00 gift card to the Northtowne Mall. Thanks for reading *Conservation News* and good luck!

S H S A S R O D I R R O C E G A T I R E H V M K Y  
 T N C P A R B S S E S C I M F H G T K T P A O N T  
 P K O V A U E T U O X L O A Y N Z A W I N Z V A E  
 S M W S E R A C R E A H I N I I G B M D N N T B I  
 N Y A H D T T B U U X R I T K R N U E E M B B E C  
 S I R W E N L A T D F T A B I L C R Y R E R V T O  
 L E A B S H A U N O O V E C I F I Y E C G O R A S  
 R I A M O K M N U I A R U N T T Q N R M V O E T E  
 L N O K E N C N I C N L P S S Z O E E R J K H S N  
 K Z B Y A K D A X T T S E Y Y I Z R Q A E V B D A  
 N X G M E A Y E L U R W U X R I O R U F W I Q O M  
 Y D R W T N A T R B D A R R L I U N I E E E K O U  
 Q E V I C L O E S I I S M V A N A F P T L W T W H  
 G S O Y L Y X F M F D Q J L W N X D M R L I I R S  
 O N S A L F A R M B U R E A U R C V E E G H D E P  
 Q L C F I R S T F E D E R A L A W E N A R O E H O  
 I C L L A M E N W O T H T R O N P G T G A W R S N  
 M S M R A F R E P O O C M R C S A L E S I K C G S  
 I E X V V A R C H B O L D E Q U I P M E N T G O O  
 L Y R I A D S P R A I A E I Y R A U N A J N A A R

Ag Credit  
 Archbold Equipment  
 Black Swamp  
 Conklin  
 Exhibitor  
 Farm Credit  
 German Mutual  
 Jewell Grain  
 Meyer Equipment  
 Ney Oil  
 Paul Martin and Sons  
 Sponsor

Agriculture  
 Brookview  
 Cooper Farms  
 Fair Foundation  
 First Federal  
 Humane Society  
 Kohl Bros.  
 Midwest FCU  
 MV Heritage Corridor  
 Northtowne Mall  
 Sherwood State Bank  
 State Bank

Arps Dairy  
 Buehrer  
 Dairy Producers  
 Farm Bureau  
 Gaerte  
 January  
 McCalla Excavating  
 MRC Sales  
 OSU Extension  
 Spartan Insurance  
 Stykemain

Name: \_\_\_\_\_ Phone Number: \_\_\_\_\_

# CONSERVATION NEWS

NON-PROFIT ORG.  
U.S. POSTAGE PAID  
PERMIT #281  
DEFIANCE, OHIO

## **Defiance Soil and Water Conservation District**

06879 Evansport Road, Suite C, Defiance, Ohio 43512  
Phone 419-782-1794 Fax 419-782-1791  
swcd@defiance-county.com  
www.defiance-county.com/swcd

### **Board of Supervisors**

Tom Beck  
Bill Moats  
Dan Vetter  
Keith Schroeder  
Roger Zeedyk IV

### **District Personnel**

Jason Roehrig  
Terri Agler  
Ben Gerken  
Tyler Miller  
Stephanie Singer  
Bill Grimes  
Jake Mahnke (Intermittent)

### **Ditch Maintenance Personnel**

Kevin Hancock  
Ed Walters  
Dave Sines

### **NRCS Personnel**

Steve Snyder  
Lori Shank  
Mike Boff

## **Kids' Outdoor Science Camp**

Come explore the outdoor environment and learn about fossils, owl pellets, wildlife CSI, forensics, swimming, canoeing and much more at the Kids' Outdoor Science Camp. This outdoor adventure is for 9-14 year olds (youth having completed grades 3-8) and will be held Wednesday, June 4<sup>th</sup> through Saturday, June 7<sup>th</sup> at 4-H Camp Palmer near Fayette, Ohio. The theme for this year is "Who Dunitt." Scholarships sponsored by the Defiance SWCD, 3 Rivers Conservation Club, and the Fairview Young Farmers are available for Defiance County residents. Please contact the Defiance SWCD office at 419-782-1794 for more information and for registration forms. Don't miss out...registration deadline is May 19<sup>th</sup>!



## **Black Swamp Educators' Extravaganza**



For those who are "young at heart," Northwest Ohio Soil and Water Conservation Districts will be offering the Black Swamp Educators' Extravaganza this summer. You do not need to be a formal educator to attend this informative program—all you need is an interest in conservation and the desire to learn more about environmental education. All participants will receive *Aquatic Wild* materials from the Ohio Department of Wildlife. Join us Wednesday, June 18<sup>th</sup> through Friday June 20<sup>th</sup>. The workshop will held at the Ottawa National Wildlife Refuge near Oak Harbor, Ohio and at Kelly's Island. You will take away energetic, exciting, new ways to teach fracking, energy, aquatics, and more. Please contact the District for more information and registration materials.